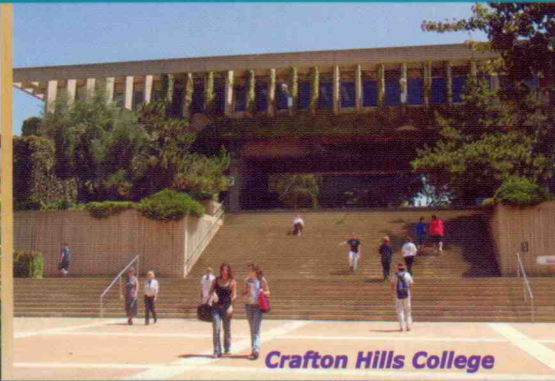




MEASURE P



San Bernardino Valley College



Crafton Hills College

2006-2007 Citizens' Oversight Committee Report To The Community



BACKGROUND ON MEASURE P

In 2002, the voters of the San Bernardino Community College District approved Measure P, a \$190 million bond measure designed to improve safety and infrastructure at San Bernardino Valley College and Crafton Hills College. Measure P also will construct new classroom buildings and training centers.

Because Measure P was an election under Proposition 39, the District was obliged to establish a Citizens' Oversight Committee in order to satisfy the accountability requirements of Prop. 39. Regulated by the Ralph M. Brown Public Meetings Act, the Committee reviews expenditures reports to ensure that a) bond proceeds are expended only for the purpose set forth in the ballot measure; and b) no bond proceeds are used for any teacher or administrative salaries or operating expenses.

OVERSIGHT COMMITTEE FORMED

Applications for the Citizens' Oversight Committee were made available to representative groups within the district, as well as to the public at large. A 12-member Citizens' Oversight Committee was formed, with representatives of businesses, senior citizens, taxpayers, district support groups and students. The committee reports to the District's Governing Board. District staff members or individuals in a financial relationship with the District may not serve on the Committee. Members serve one or two-year terms and receive no compensation.

In addition to reviewing bond expenditures, the Committee is responsible for informing the public concerning the District's expenditure of bond proceeds and for presenting to the Board, in public session, an annual report.

2006-07 OVERSIGHT COMMITTEE ACTIVITIES

The Oversight Committee met regularly during the year to review bond expenditures and get an update on bond projects. They met on July 18 for the annual organizational meeting, November 14 and again on March 27 at the District Office. Committee members were also invited to ribbon cuttings and grand openings.

BOND EXPENDITURE UPDATE

San Bernardino Valley College began an extensive construction program in 2002 because it was discovered that the San Jacinto fault line crosses diagonally through the campus, compromising the structural integrity of seven buildings. In an effort to rectify the problem, Valley College received federal and state funding to replace the structures located within a 200-foot wide fault zone. Five new buildings were constructed to replace the seven that needed to be demolished; this construction is referred to as the FEMA project.

Because federal and state funding was not adequate for this major construction project, almost all of the first issuance (\$50 million) of Measure P bond monies was allocated to SBVC projects. The first issuance was received on May 15, 2003.

The second issuance was for \$20 million and was received on February 26, 2004. Almost all of these funds are being used for Crafton Hills College, including major energy updates and developing a Master Plan.

The third issuance was received on September 13, 2006 for \$100 million. This issuance allowed the District to focus on the Master Plans developed for each college, with planning through 2025.

MEASURE P OVERSIGHT COMMITTEE MEMBERS

Winston Carl, Senior Citizen Organization Representative
Lois J. Carson, SBVC Foundation Representative
Pat Ferraris, Community-at-Large Representative
Graciano Gomez, Business Organization Representative
Dr. Elizabeth Harris, Community-at-Large Representative
Dr. Ronald O. Kibby, Community-at-Large Representative
Wilfrid C. Lemann, KVCR Foundation Representative
Lenore B. Manak, Tax Payer Organization Representative
Wesley C. McDaniel, Community-at-Large Representative
Dennis Partain II, Student Representative
David E. Raley, CHC Foundation Representative
Laurie Stalnaker, Business/Labor Organization Representative

LEVERAGING OF BOND FUNDS

The District makes every effort to leverage Measure P funds with state and federal funds in order to stretch the tax payers' dollars. Of the \$156 million spent to-date on district construction project, \$93 million was from bond funds and \$62 million was received from federal, state and local sources. This shared approach to funding resulted in 60 percent of project costs coming from the general obligation bond and 40 percent paid by the state and federal governments.

In fact, the District also is a partner in a Joint Powers Authority that received \$12 million in federal funds to build the Jerry Lewis Emergency Training Center. Crafton Hills College, working jointly with the San Bernardino County Fire Department, oversees the educational component of this program. The \$12 million are not reflected in our project expenditure report because the funds were not managed by the SBCCD.

The funding strategy used in these past projects will be utilized whenever possible for future capital construction

projects. This funding strategy demonstrates the efforts the District has made to maximize the use of local bond funds.

In addition, the District refinanced its general obligation bonds in 2004 to yield an additional \$7 million for construction projects. Due to an increase in the total assessed valuation of property in San Bernardino and Riverside Counties, and because the District has one of the highest ratings in San Bernardino County (AA-), the District was able to refinance its general obligation bonds totaling \$56 million. The refinance accomplished three objectives: a) reduce the number of years that taxpayers will be required to pay for the bonds; 2) reduce the total debt service on the bonds; and 3) provide additional funds to pay for vital projects. **Taxpayers will save over a million dollars by reducing their bond debt by five years.**

"It's a win-win situation for the taxpayers and the District," says Bob Temple, Vice Chancellor of Fiscal Services. "They save money and we end up with additional funds that will help us upgrade our facilities and programs for students."

SCHEDULE OF BOND PROJECT EXPENDITURES & LEVERAGED FUNDS

San Bernardino Community College District Measure P Bond Construction Fund

Bond Projects	TOTAL PROJECT COST THROUGH JUNE 30, 2006	2007 ACTUAL COSTS *	TOTAL PROJECT COSTS THROUGH JUNE 30, 2007	LEVERAGED FUNDS		TOTAL LEVERAGED FUNDS	TOTAL PROJECT COSTS FROM ALL FUNDING SOURCES
				STATE AND LOCAL FUNDS	FEDERAL FUNDS		
SBVC Football Field Refurbishment	\$981,166.50	\$0.00	\$981,166.50			\$0.00	\$981,166.50
SBVC Retrofits & Modernization Projects	\$2,401,987.63	\$0.00	\$2,401,987.63	\$9,126,411.40		\$9,126,411.40	\$11,528,399.03
SBVC Student Health Services	\$255,215.81	\$310,642.00	\$565,857.81			\$0.00	\$565,857.81
SBVC Child Development Center	\$3,526,161.78	\$2,190,801.33	\$5,716,963.11	\$3,117,999.55		\$3,117,999.55	\$8,834,962.66
SBVC Infrastructure	\$8,902,501.19	\$1,707,897.50	\$10,610,398.69			\$0.00	\$10,610,398.69
SBVC FEMA Seismic Mitigation Project	\$35,619,252.47	\$6,251,469.21	\$41,870,721.68	\$14,121,961.31	\$34,114,352.00	\$48,236,313.31	\$90,107,034.99
SBVC FEMA Furniture	\$1,959,906.95	\$119,505.26	\$2,079,412.21			\$0.00	\$2,079,412.21
SBVC Demolition	\$1,987,748.53	\$1,727,138.01	\$3,714,886.54			\$0.00	\$3,714,886.54
SBVC Data Building	\$457,186.83	\$1,894.06	\$459,080.89			\$0.00	\$459,080.89
SBVC Campus Master Planning Services	\$1,027,110.89	\$557,586.00	\$1,584,696.89			\$0.00	\$1,584,696.89
SBVC North Hall Seismic Replacement	\$0.00	\$806,750.10	\$806,750.10			\$0.00	\$806,750.10
SBVC Maintenance & Operations Replacement	\$0.00	\$249,570.52	\$249,570.52			\$0.00	\$249,570.52
SBVC North Hall Media Communications Seismic Replacement	\$0.00	\$453,267.05	\$453,267.05			\$0.00	\$453,267.05
SBVC Chemistry/Physical Science Seismic Replacement	\$0.00	\$716,924.39	\$716,924.39			\$0.00	\$716,924.39
SBVC Program Management Fees	\$0.00	\$1,145,747.57	\$1,145,747.57			\$0.00	\$1,145,747.57
SBVC Program Support	\$0.00	\$0.00	\$0.00			\$0.00	\$0.00
CHC Fire Training Facility	\$150,000.00	\$0.00	\$150,000.00			\$0.00	\$150,000.00
CHC Administrative Services Remodel	\$2,337,542.36	\$41,154.52	\$2,378,696.88			\$0.00	\$2,378,696.88
CHC Energy Updates	\$6,365,613.99	\$0.00	\$6,365,613.99	\$115,900.00		\$115,900.00	\$6,481,513.99
CHC Infrastructure	\$894,726.79	\$0.00	\$894,726.79			\$0.00	\$894,726.79
CHC Project Management	\$1,521,818.75	\$2,050,493.00	\$3,572,311.75			\$0.00	\$3,572,311.75
CHC Seismic Fault Exploration	\$66,845.83	\$14,573.55	\$81,419.38			\$0.00	\$81,419.38
CHC Seismic Environmental Services	\$86,406.84	\$0.00	\$86,406.84			\$0.00	\$86,406.84
CHC Humanities Building	\$81,787.61	\$4,012.39	\$85,800.00			\$0.00	\$85,800.00
CHC Arts & Lecturers Building	\$130,100.00	\$0.00	\$130,100.00			\$0.00	\$130,100.00
CHC Community Pool	\$57,486.26	\$0.00	\$57,486.26			\$0.00	\$57,486.26
CHC Campus Master Planning Services	\$1,150,392.48	\$10,662.84	\$1,161,055.32			\$0.00	\$1,161,055.32
CHC Infrastructure 1-Communications Relocation	\$0.00	\$0.00	\$0.00			\$0.00	\$0.00
CHC Infrastructure 2-Utility Corridor	\$0.00	\$91,808.00	\$91,808.00			\$0.00	\$91,808.00
CHC Infrastructure 3-Peninsula Development	\$0.00	\$0.00	\$0.00			\$0.00	\$0.00
CHC Infrastructure 4-DSA Accessibility Components	\$0.00	\$0.00	\$0.00			\$0.00	\$0.00
CHC Infrastructure 5-Athletics & CRF Site Preparation	\$0.00	\$643,000.00	\$643,000.00			\$0.00	\$643,000.00
CHC Community Recreation Facility	\$0.00	\$645,913.74	\$645,913.74			\$0.00	\$645,913.74
CHC Learning Resource / Technology Center	\$0.00	\$643,000.00	\$643,000.00			\$0.00	\$643,000.00
CHC Program Support	\$0.00	\$0.00	\$0.00			\$0.00	\$0.00
District Applied Technology and Training Center	\$0.00	\$3,261,495.53	\$3,261,495.53		\$2,096,988.89	\$2,096,988.89	\$5,358,484.42
TOTALS	\$69,960,959.49	\$23,645,306.57	\$93,606,266.06	\$26,482,272.26	\$36,211,340.89	\$62,693,613.15	\$156,299,879.21

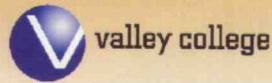
59.89%

40.11%

100%

* - Represents unaudited amounts. Conclusion: For every 60 cents spent of Measure P funds, the District has spent 40 cents of matching funds from federal, state and local sources.

2006-2007 SAN BERNARDINO VALLEY COLLEGE HIGHLIGHTS



Bones Unearthed During Demolition of SBVC Campus Center

Last January, an 187,360 pound excavator lowered its bucket into a 20-foot trench to loosen and eventually remove the pillars that once served as the primary support mechanism for San Bernardino Valley College's old Campus Center. The routine excavation procedure was being closely monitored by a representative from ECORP, an environmental consulting firm based in Riverside.

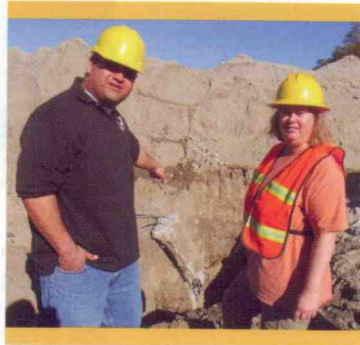
Suddenly, Koral Ahmet, archeological field director for ECORP, asked the excavator operator to stop digging. He discovered a bone encased in a dark-colored layer of earth adjacent to the pillar. As the heavy equipment operator steered away from the trench, Ahmet immediately contacted his colleague Evelyn Chandler, cultural resources manager.

Within minutes she was on the phone to the cultural heritage commissioner, the San Bernardino Community College District facilities planning office, a representative from the San Manuel Band of Serrano Mission Indians, and to the San Bernardino County coroner's office.

"We didn't know if the bones were human or animal," Chandler explained, "but we immediately stopped everything and cordoned off the area." The demolition crews were diverted to other areas while the coroner was on his way.

Four hours after the coroner arrived, it was determined that the bones were not human. But the significance of the find goes much deeper than where the bones were discovered.

"If they are animal bones they could be next to a roasting pit area," said James Ramos, a representative from the San Manuel Band of Serrano Mission Indians who serves as the tribe's main contact when discoveries of this type are made. The project was put on hold as representatives from ECORP carefully sift through the soil where the bones were discovered. According to Chandler, three



James Ramos & Evelyn Chandler

different sites have unearthed small bone fragments spanning a 35-yard radius.

It is common knowledge and documented that the land SBVC was constructed upon was inhabited by Serrano Indians - the indigenous people of the San Bernardino highlands, passes, valleys and mountains who share a common language and culture. The San Manuel reservation was established in 1891 and recognized as sovereign nation with the right of self-government.

When the original SBVC campus was being constructed in 1927, engineers discovered what was later determined to be a burial ground of the Serrano Indians. That same year SBVC deemed its mascot the "Indians" as a tribute to their people.

"We are proud of our heritage," commented Ramos. "If they had discovered human bones we would ensure that the site would not be disturbed." In the past, such finds have resulted in marking the site with a cement placard so that future development would not disturb the graves. The find would also be noted on site maps. In some cases, if the remains were closer to the surface, the bones would remain in the same area but would be buried deeper so they could not be disturbed.

\$11 Million Art Center Dedicated

The new \$11 million, 24,000 square foot San Bernardino Valley College Art Center was formally dedicated at a ceremony on April 4, 2007. SBVC staff, students and community leaders were on hand to celebrate the fifth new "Millennium Look" building to be opened on the 85-acre campus since 2004.

The ceremony concluded a day-long celebration that included demonstrations and tours of the new facility, highlighted by a glassblowing demonstration by Grand Master Elio Quarisa from Italy. The free demonstration featured

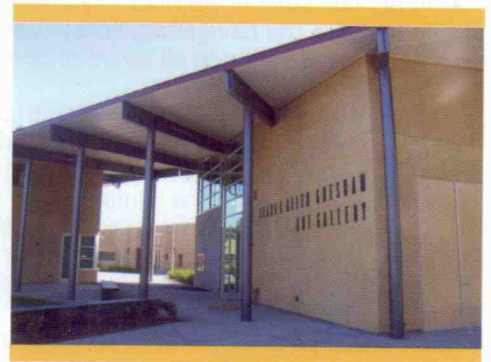
his world-famous work in the new glassblowing "Hot Shop."

The Art Center replaced two buildings on the campus. The original Art Building was constructed in 1964 and a separate Art Gallery was erected in 1976. Both were demolished last winter because they either straddled or were within a 50-foot-limit of the San Jacinto earthquake fault line.

The new Art Center was engineered to combine both the Art Building and Art Gallery into a single complex. The San Bernardino Community College District Board of Trustees has named the new Art Gallery after Clara and Allen Gresham for their years of support and service to the Art Department and to the SBVC Friends of the Gallery.

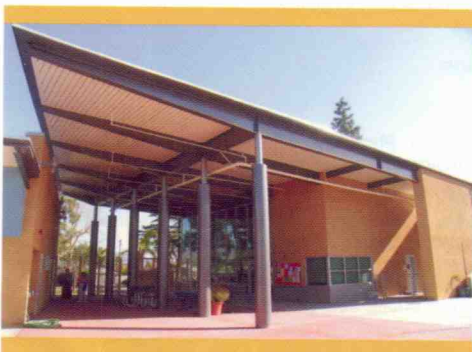
Child Development Center Dedicated

A dedication ceremony for the new SBVC Child Development Center (CDC) was held on May 18, 2007 in the courtyard of the new CDC. The \$5.4 million facility provides 37,000 square feet of classroom, office and storage space and an additional 43,000 square feet of play area. The



Art Gallery

SBVC Child Development Center was established in 1974 and was previously housed just south of the campus on Grant Street. The new center includes a concrete outdoor amphitheatre for children to conduct plays and a unique ceramic wall created from artwork produced by students. The center serves toddlers as young as three months and children between two and five years of age. The children led the dedication guests in the Pledge of Allegiance and presented the SBCCD Board of Trustees, Chancellor and College President with a large "thank you" banner containing handprints of the children enrolled in the center.



Child Development Center

2006-2007 CRAFTON HILLS COLLEGE HIGHLIGHTS

Crafton Hills
COLLEGE

Crafton Hills College completed their master planning last year and began design and drawings for the Learning Resource Center, the Community Recreational Facility and the supporting infrastructure.

Goals of Master Plan

Student Life

- To recruit and retain students at Crafton Hills College through meeting their academic and campus life expectations.
- To support growth in student enrollment with the expansion of campus facilities and the development of technical capabilities.
- To create a student-centered college that facilitates graduation and matriculation keeping with students' busy lifestyles.
- To increase the number of "hot spots" throughout campus to activate student life.

Faculty and Staff Life

- To provide an atmosphere that fosters and supports faculty and staff interaction, faculty training in new technologies and the development of new instructional programs.

Community

- To enhance the identity of Crafton Hills College in the community.
- To create an inviting environment that promotes community involvement.
- To provide programs and facilities that meets the needs of the community.

Access

- To provide easy access to information, resources and services at the college.
- To provide student services any time, any place, any pace.
- To improve the navigation, accessibility and identification of the campus during all hours of operation.

Campus Environment

- To create state-of-the-art building that responsibly address and accommodate the projected growth for the college while maintaining park-like atmosphere and architectural integrity of the campus.
- To create a physical framework and infrastructure that will allow Crafton Hills College the flexibility to grow and adopt as technology and instructional methods evolve.

The proposed plan for the next 10 years includes:

- The construction of a General Education (formerly labeled Humanities) Building and Learning Resource Center
- The establishment of a community area that would include a natatorium (pool area)
- The "clustering" of the different academic programs in their own respective areas
- The expansion of the Performing Arts Center
- Setting up outdoor tables that take advantage of the views creating outdoor spaces that accommodate a diversity of academic, social, and community uses
- Increasing the number and diversity of trees, adding special features such as water and art, and diversifying the plants
- Creating a hierarchy of paths and outdoor spaces that clarify campus entry points and orient visitors to the academic, administrative, and recreational and social spaces
- Community recreation facility, athletic field, and parking lot planned for after 2012
- The addition of parking structures on each end of campus, one by 2012 and the other after 2012

2006-07 DISTRICT HIGHLIGHTS Applied Technologies Training Center Breaks Ground

The San Bernardino Community College District broke ground on March 28, 2007 for The Applied Technologies Training Center (ATTC) at 114 S. Del Rosa Drive in San Bernardino.

The ATTC is being funded by a \$2 million grant from the Economic Development Administration of the U.S. Department of Commerce, the U.S. Department of Housing and Urban De-



Applied Technologies Training Center

velopment and over \$3 million from the Measure P bond.

The ground breaking included remarks by SBCCD Chancellor Don Averill, Senator Nell Soto, Supervisor Josie Gonzales and a representative from EDA.

The Applied Technologies Training Center is a high-tech training facility that delivers affordable, customized and high quality training at a pace, schedule and location convenient for employers in the Inland Empire. It is part of The Professional Development Center which runs under the auspices of the San Bernardino Community College District.

CERTIFICATION OF BOND EXPENDITURES

The SBCCD Vice Chancellor of Fiscal Services certifies that the bond proceeds for FY07 were expended only for the purposes set forth in the ballot measure and that no bond proceeds were used for any teacher or administrative salaries or other operating expenses.

The expenditures for FY07 will be audited by our external auditors, Eadie & Payne, and the audit findings will be presented to the Oversight Committee in early 2008.

SBCCD GOVERNING BOARD

Dr. Donald L. Singer, President
Dr. Charles S. Terrell, Jr., Vice President
James C. Ramos, Clerk
Marie Alonzo
Charles H. Beeman
Allen B. Gresham
Carleton W. Lockwood, Jr.

PUBLISHED AUGUST 2007 BY:

The San Bernardino Community College District
Marketing & Public Affairs
114 S. Del Rosa Drive
San Bernardino, CA 92408
909-382-4094

Donna Hoffmann, Editor
Patrick Fite and Paul Rubalcaba, Photography and College Highlights
Gloria Piggott, Graphic Designer
Printed by SBCCD Printing Services

The San Bernardino Community College District (SBCCD) consists of San Bernardino Valley College and Crafton Hills College in Yucaipa. The SBCCD is an equal opportunity employer and is committed to an active Non-Discrimination Program. Sexual harassment and discrimination, which is based on race, color, religion, ancestry, national origin, age, sex, marital status, persons with disabilities and medical conditions (cancer related, cured or rehabilitated), Vietnam Era Veterans or sexual orientation is prohibited under the district policy.